

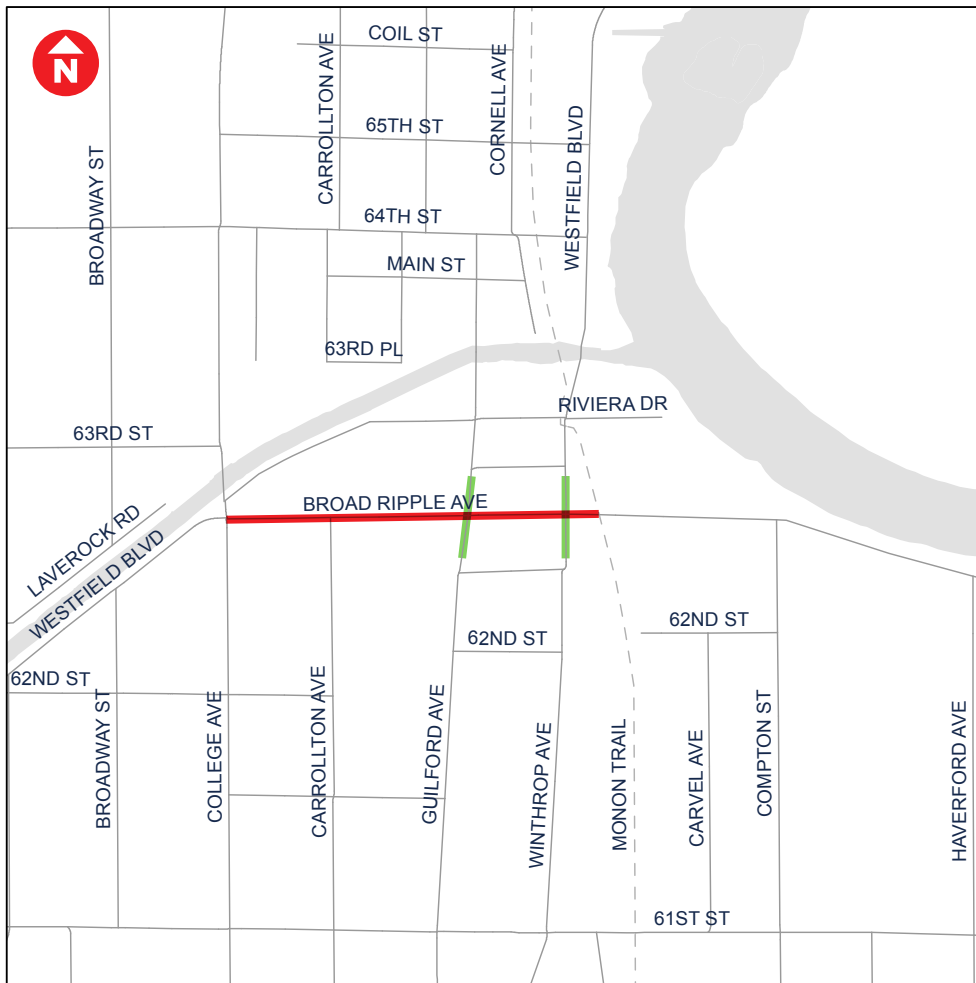
Dine Out Indy: Broad Ripple Avenue Closure

The Indianapolis Department of Public Works will partially close Broad Ripple Avenue beginning May 22 to create a pedestrian-friendly corridor that allows for proper social distancing. This will also create additional opportunities for expanded outdoor dining and retail set-up.

Closures are expected to last through July 4 weekend in conjunction with the city's Safe Summer reopening plan and Marion County Public Health Department orders.



Broad Ripple Avenue



BROAD RIPPLE AVENUE WILL BE CLOSED FROM COLLEGE AVENUE TO THE MONON TRAIL.

Eastbound traffic traveling around the Broad Ripple Avenue closure will detour southbound on College Avenue, then eastbound on Kessler Boulevard Drive, then northbound on Keystone Avenue, then westbound on Broad Ripple Avenue before rejoining the route.

Westbound traffic on Broad Ripple Avenue will detour east to Keystone Avenue, then southbound on Keystone Avenue, then westbound on Kessler Boulevard E Drive, then northbound on College Avenue before rejoining the route.

Designated Restaurant Districts

Allowed Cross Traffic